



CARRY-VIEWER™ 4

Handheld COFDM Receiver Monitor



> Applications

- Law Enforcement
- Overt/Covert Surveillance
- Film Production Live Assist
- UAV/UGV Remote Video Terminal (RVT)

> Features

- Dual Mode MPEG2 and H.264 Decoding
- COFDM DVB-T Compliant
- 1920 x 1080 LCD Hi-Res Monitor
- 2-Way FFT/MRC Diversity
- Light Weight and Rugged
- Touch Screen Operation
- Auto-Brightness Control
- 2+ Hours Battery Run Time
- Automatically Adjusts to All Transmit Parameters
- Geo-Point™ Location System
- BTP (BMS Transmission Privacy)

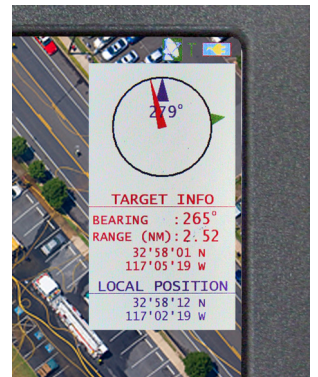
OPTIONS

- AES 128/256 Decryption

> Features

The BMS Carry-Viewer™ 4 (CV4) is a COFDM digital handheld portable microwave receiver with two-way diversity for law enforcement, public safety, homeland security, and Unmanned Vehicle Remote Video Terminal (RVT) applications. The CV4 shows live video downlinked from an aircraft, UAV/UGV, or wireless cameras using digital COFDM technology. This handheld receiver employs a 7" high resolution, LCD color monitor (1920x1080) and intuitive touch-screen menus for easy operation.

The unique Geo-Point™ feature captures metadata from the video source and using the built-in compass and GPS receiver, displays the bearing and distance to the location shown on the screen, all in real time! (Geo-Point™ requires compatible transmitter.)



Detail: Geo-Point™

The Carry-Viewer 4 comes supplied with a variety of useful accessories including antennas, AC and DC charger, earphones, video cable, and hard-shell case.

> Carry-Viewer™ 4 Receiver

> Technical Characteristics

Features	<ul style="list-style-type: none"> • LED Backlight • BTP for Privacy • Automatically Adjusts to Transmit Parameters (Except Frequency) • Geo-Point • Touch-Screen Control • Weather Resistant
Supplied Accessories	<ul style="list-style-type: none"> • Hard shell case • 2 dBi Omni Antenna (x2) • Universal AC Charger • DC vehicle charger • Earphones • HDMI video cable
Options	<ul style="list-style-type: none"> • AES 128/256 Encryption • Extended Range Antennas

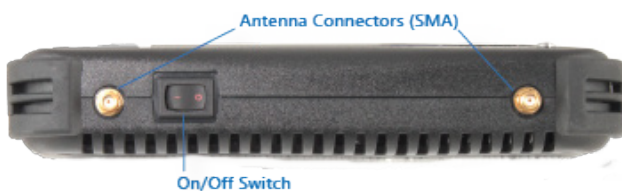
> Inputs/Outputs

SMA (f)	RF In	2x RF Signal Input	50 Ω
Stereo Socket 2mm	Audio L/R	Headphone O/P	16/32 Ω
Micro HDMI	Video/audio Out		
Micro USB OTG	Video Storage, Software Upgrade		2.0
RJ45	Ethernet	Streaming (QPSK modulation only) and configuration	
Pwr Jack	External Input	External DC Power Input	
SD Media		Micro SD card slot	

> Ordering Information

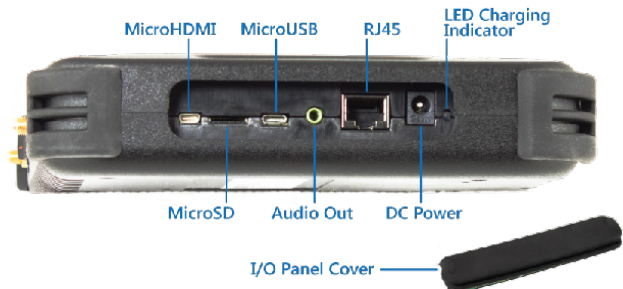
CV4-1	1.3-1.5 GHz
CV4-2	1.99-2.5 GHz
CV4-4	4.4-5.0 GHz
CV4-5	5.7-5.9 GHz
CV4-6	6.425-6.525 GHz
Extended Range Antennas	Varies by application

Other frequencies available, contact factory



> Specifications

Frequency (Available Bands)	1.4-1.5 GHz, 1.99 - 2.5 GHz, 4.4 - 5.0 GHz, 5.8 GHz, 6.425 - 6.525 GHz (others available; contact BMS.)		
LCD Display	7.0", 1920 x 1080 Daylight Viewable, Contrast Ratio 800:1, 700 nits		
Video Storage	To micro-SD card, record/playback		
MPEG-2 Decoding	4:2:0		
H.264 Decoding	4:2:0		
Video Resolutions	NTSC	525i	59.94
	PAL	625i	25, 50
	HD-SDI	720p	25, 50, 59.94, 60
	HD-SDI	1080i	59.94, 60
Video Output	HD-SDI	1080p	29.97, 30
	1 HDMI video/audio		
Audio Channels	2		
Data Channel	Internal Reception		
COFDM Demodulation	DVB-T Compliant (2K Carriers) 2 Channel Reception, FFT-M/RC Diversity		
Channel Bandwidth	6/7/8 MHz		
Run Time	>2 hr. Depending on Options		
Input Voltage	+9 to 20 VDC		
Size	7.0 x 9.0 x 1.7" (17.78x22.86x4.32 cm)		
Weight	3.5 lbs. (<1.36 kg)		
Battery	Internal, 5.5AH Li-Ion		
Operating Temperature	-4° to + 140° F (-20° to +60° C)		
Ingress	IP64		



Broadcast Microwave Services, LLC | www.bms-inc.com | sales@bms-inc.com

Corporate Headquarters
12305 Crosthwaite Circle | Poway, CA 92064 US
Phone: +1 (858) 391-3050 | Fax: +1 (858) 391-3049

European Sales and Support Office
In Der Au 19 | 61440 Oberursel | Germany
Phone: +49 (0) 6171 7408 224 | Hotline: +49 (0) 177 7288 304

